

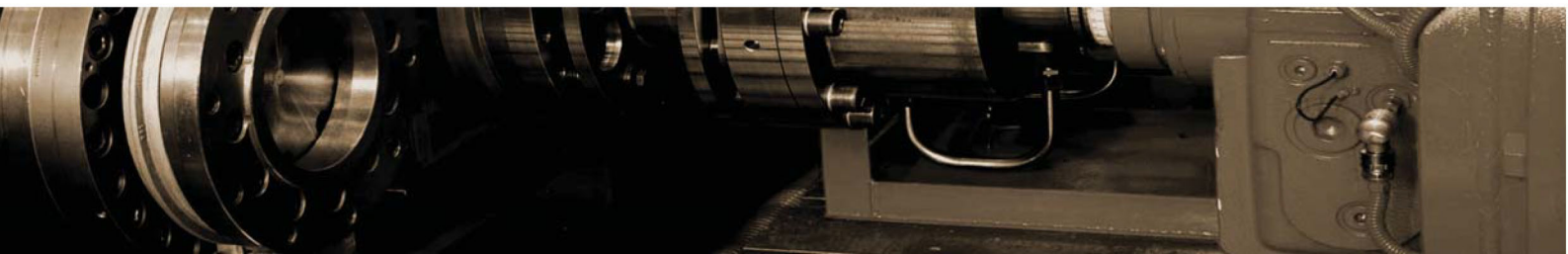
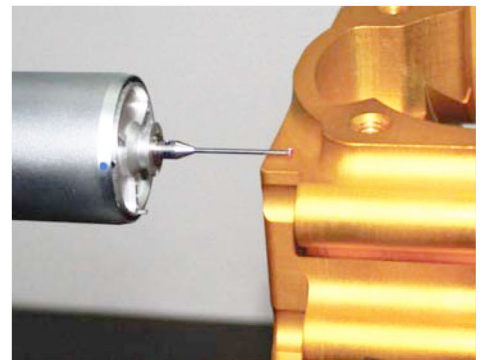
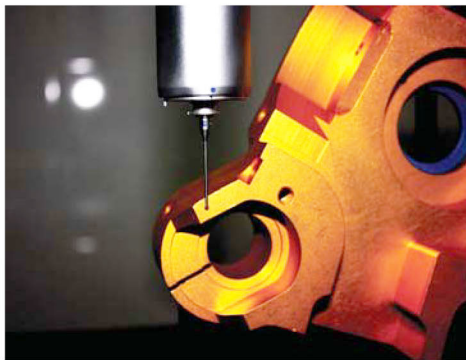
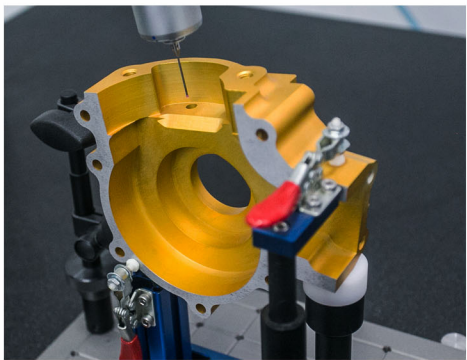


TM

# SIAM TOOL ENGINEERING



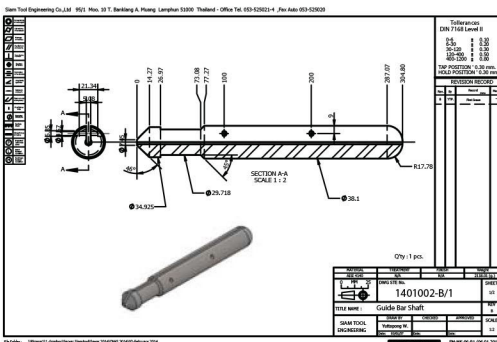
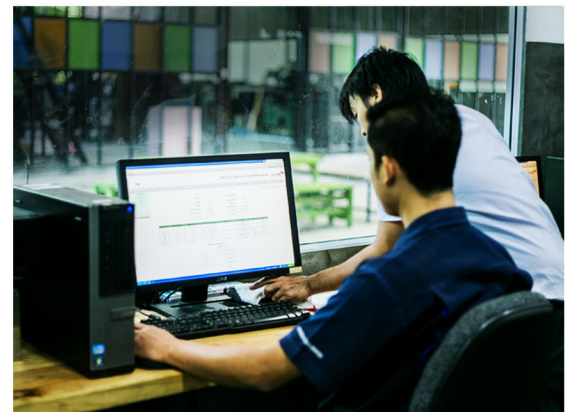
“Commitment to excellence to be the best producer in parts and components in the northern region”



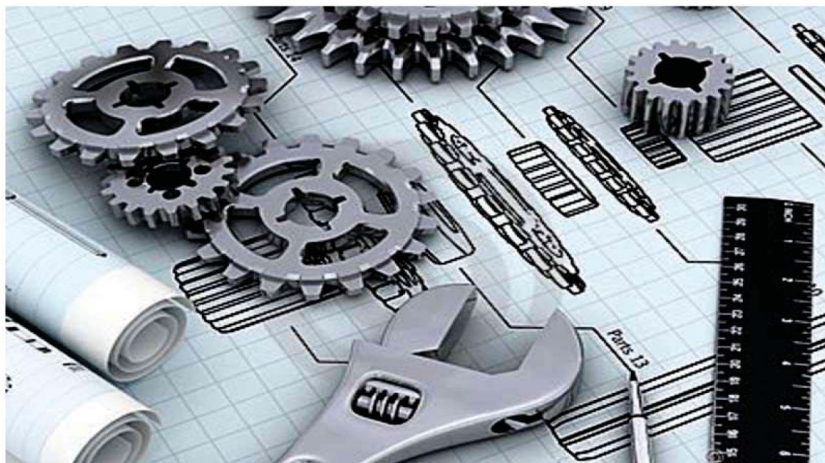


## Concept Design

Our company's policy is using computer programs to create simulations for product design, so customers can make their satisfy consideration before process the actual production. We are well equipped with licensed software such as CAD/CAM, CAD/CAM as well as a service of our qualified staff. We also have software training course and practical course on CAD/CAM, CAD/CAM and including using on CNC machines. We are confident in our efficient staff that will be available to provide in-depth details advice to serve all customers' requirement.



Design Engineer is distinguished from designer/drafter by virtue of the fact that a Design Engineer sets the direction of the design effort and does the most complex parts of design.



The Design Engineer usually leads the project, designing the overall frameworks and the most for reaching parts, and directing the designers/drafters on sub-system design on the project's more routine parts as necessary. Design Engineer may works with industrial designers and marketing to develop the product concept and specifications and directs the design effort from that point. Products are usually designed with input from a number of sources such as manufacturing, purchasing, tool making and packaging engineering. In many engineering areas, a distinction is made between the Design Engineer and the planning engineer in design. Planning engineers are more concerned with designing on a more systems engineering level, and overlaps onto the operational side are often necessary.





## TURNING MACHINE

A lathe is a machine tool which rotates the workpiece on its axis to perform various operations such as cutting, sanding, knurling, drilling, or deformation with tools that are applied to the workpiece to create an object which has symmetry about an axis of rotation.



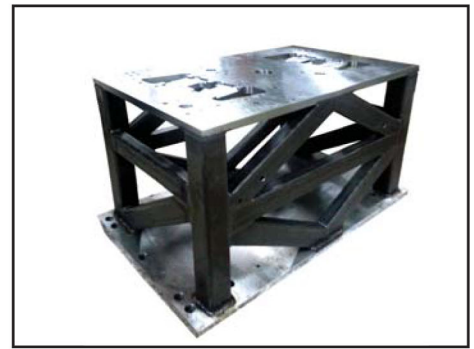
## GRINDING MACHINE

Grinding machines remove material from the work piece by abrasion, which can generate substantial amounts of heat. To cool the work piece so that it does not overheat and go outside its tolerance, grinding machines incorporate a coolant. The coolant also benefits the machinist as the heat generated may cause burns.



## WELDING MACHINE

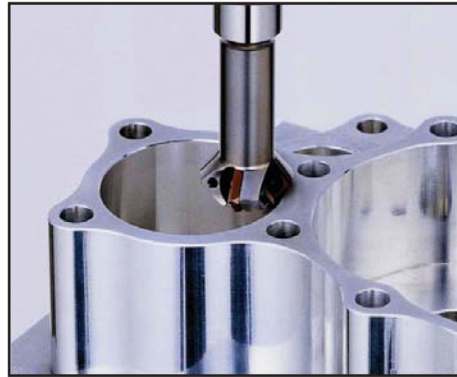
A welding machine is a device that provides an electric current to perform welding. Welding usually requires high current (over 80 amperes) and it can need above 12,000 amperes in spot welding. Low current can also be used; welding two razor blades together at 5 amps with gas tungsten arc welding is a good example. A welding power supply can be as simple as a car battery and as sophisticated as a modern machine based on silicon controlled rectifier technology with welding.





## MILLING MACHINE

Milling is the machining process of using rotary cutters to remove material from a work-piece advancing (or feeding) in a direction at an angle with the axis of the tool. It covers a wide variety of different operations and machines, on scales from small individual parts to large,



heavy-duty gang milling operations. It is one of the most commonly used processes in industry and machine shops today for machining parts to precise sizes and shapes.

## MINI CNC

CNC (Computer Numerical Control) or MINI CNC is the machine control by desktop PC and designs for use in cutting, engraving various materials such as wood, metal, plastic and other material precisely and high efficiency.



MODEL MINI CNC MADE FROM SIAMTOOL

The machine can be used for both 2D cutting and 3D cutting. Originally, CNC is designed for use in large scale industries. Then CNC becomes more popular, some people modified CNC machine to use as multi cutting tool. Some people call it CNC Router or CNC Router Machine. This type of CNC is kind of CNC Milling which the purpose is for semi-industrial business such as billboards, cutting letters, furniture business, wood cutting, wood carving business and so on.

MINI CNC designed for small scope works which can be used for both 2D cutting and 3D bas relief. Some model also is able to work on round relief carving by using 4 Axis CNC Engraver. At the beginning, many people use MINI CNC for their hobbies such as miniature aircraft or model. After that, it is turn to involve in Small and Medium businesses. MINI CNC can be used for:

- Buddha or Sacred objects wood 3D engraving or bee wax 3D engraving for molding work.
- Jewelry master prototype 3D engraving
- Small wood cutting work for SMEs, mostly 2D cutting
- Milling plastics, acrylics sheets, and industrial plastic
- General handicraft, Hobby CNC
- Name plate
- Machine control label engraving



LUANG PU THUAT

KRUBA SRIWICHAI

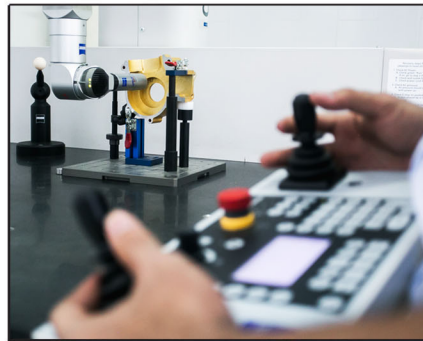
PHRA PHUTTHA SIHING





# Inspection

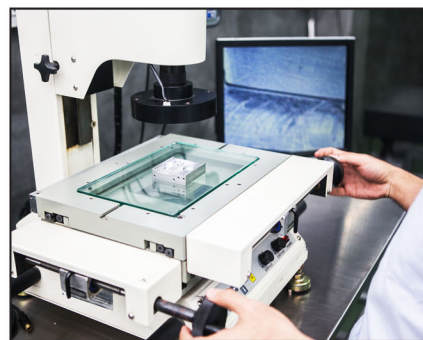
A coordinate measuring machine(CMM) is a device for measuring the physical geometrical characteristics of an object. This machine may be manually controlled by an operator or it may be computer controlled. Measurements are defined by a probe attached to the third moving axis of this machine. Probes may be mechanical, optical, laser, or white light, amongst others. A machine which takes readings in six degrees of freedom and displays these readings in mathematical form is known as a CMM.



CMM-CNC



HEIGHT GAGES



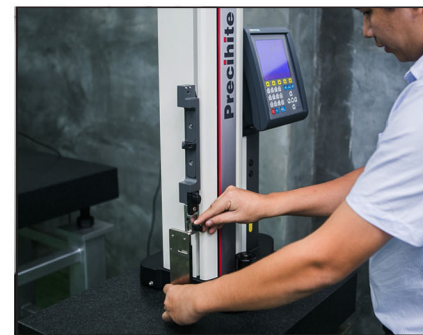
NON CONTACT



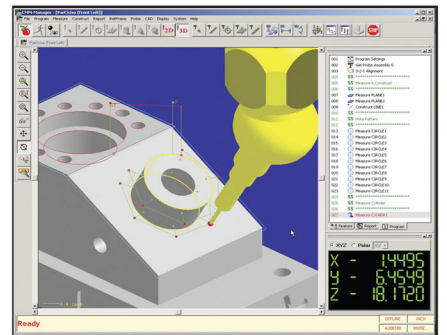
COMPARATOR



PRECISION GD&T



HEIGHT MASTER



CMM - INSPECTION

The typical 3 "bridge" CMM is composed of three axes, an X, Y and Z. These axes are orthogonal to each other in a typical three-dimensional coordinate system. Each axis has a scale system that indicates the location of that axis. The machine will read the input from the touch probe, as directed by the operator or programmer. The machine then uses the X,Y,Z coordinates of each of these points to determine size and position with micrometre precision typically.

A coordinate measuring machine (CMM) is also a device used in manufacturing and assembly processes to test a part or assembly against the design intent. By precisely recording the X, Y, and Z coordinates of the target, points are generated which can then be analyzed via regression algorithms for the construction of features. These points are collected by using a probe that is positioned manually by an operator or automatically via Direct Computer Control (DCC). DCC CMMs can be programmed to repeatedly measure identical parts, thus a CMM is a specialized form of industrial robot.





## CNC MACHINE

Numerical control (NC) is the automation of machine tools that are operated by precisely programmed commands encoded on a storage medium, as opposed to controlled manually via hand wheels or levers, or mechanically automated via cams alone. Most NC today is computer numerical control (CNC), in which computers play an integral part of the control. In modern CNC systems, end-to-end component design is highly automated using computer-aided design (CAD) and computer-aided manufacturing (CAM) programs.



CNC LATHE



CNC MILLING



CNC TAPPING MACHINE



CNC MILLING

The programs produce a computer file that is interpreted to extract the commands needed to operate a particular machine via a post processor, and then loaded into the CNC machines for production. Since any particular component might require the use of a number of different tools – drills, saws, etc., modern machines often combine multiple tools into a single "cell". In other installations, a number of different machines are used with an external controller and human or robotic operators that move the component from machine to machine. In either case, the series of steps needed to produce any part is highly automated and produces a part that closely matches the original CAD design.



CNC WIRE CUT



CNC MILLING



CNC MILLING





## Company Profile

SIAM TOOL ENGINEERING CO.,LTD

Office & Factory	: 95/1 M.10 T.Ban-klang , A.Muang , Lamphun 51000 ( Thailand)	
Tel	: (66) 53 525 021-4 Fax : (66) 53 525 020	
E-mail	: sales@siamtool.co.th	
Contact Person	: Jirapath Jawana ( 66 ) 81 783 2189 jirapath@siamtool.co.th	
Web site	: www.siamtool.co.th	
The company slogan	: " We are Committed to Producing Products And Service To Achieve The Satisfaction of Customs. The Development of Management. "	
Established	: 2008	
Capital	: 6 M. THB	
No. of Associates	: 35 Persons	
Share Holder	: Thai 100 %	
Business	: Manufacturing	
Quality System	: ISO 9001:2015	
Industrial Served	: Electronic , Automotive , Medical Science, Food , Decor, Energy , Jewelry , Agriculture	
Employee	35 Persons	
Management	3 Persons	
Administration	2 Persons	
Quality Control	3 Persons	
Production Support	2 Persons	
Production	25 Persons	
Capacity : Moulds & dies	100	Set/Year
: Jig & Fixture	2,000	Set/Year
: Metal Parts	300,000	Piece/Year
Product & Service	Support for the Machine, Part , Mold & Die, Jig & Fixture CMM Metrology Lab, Maintenance service and Consultant .	

Our Customers





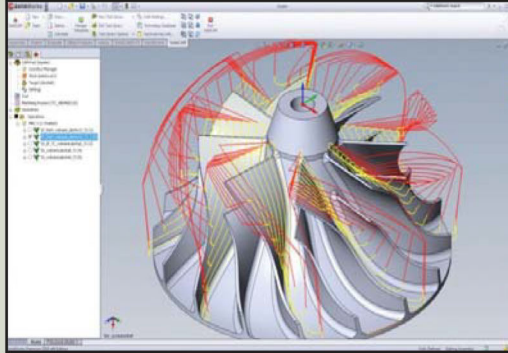


# SIAM TOOL TRAINING CENTER

## SIAM TOOL TRAINING CENTER

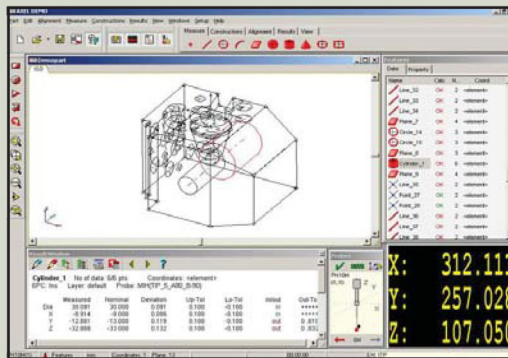
We are a training company, has been appointed to direct the course certification. Company CAD/CAM sole.

We provide training programs CAD/CAM by qualified trainers specialized knowledge of the company CAD/CAM direct and special effects for the program and practice real experiments with various types of CNC machines.



## Checking of Accuracy of Manufacture of Machine Part

We opened a training lecture, demonstration and practice of true understanding, reading and drawing machine tool, understanding the production of components primarily, understanding measurement, monitoring, measurement, examination, by experts



## We are consultants



**TIME  
DESIGN  
OUTPUT  
PROCESS  
BACK DOWN  
PRODUCTIVITY  
MACHINE TOOL  
QUALITY CONTROL**



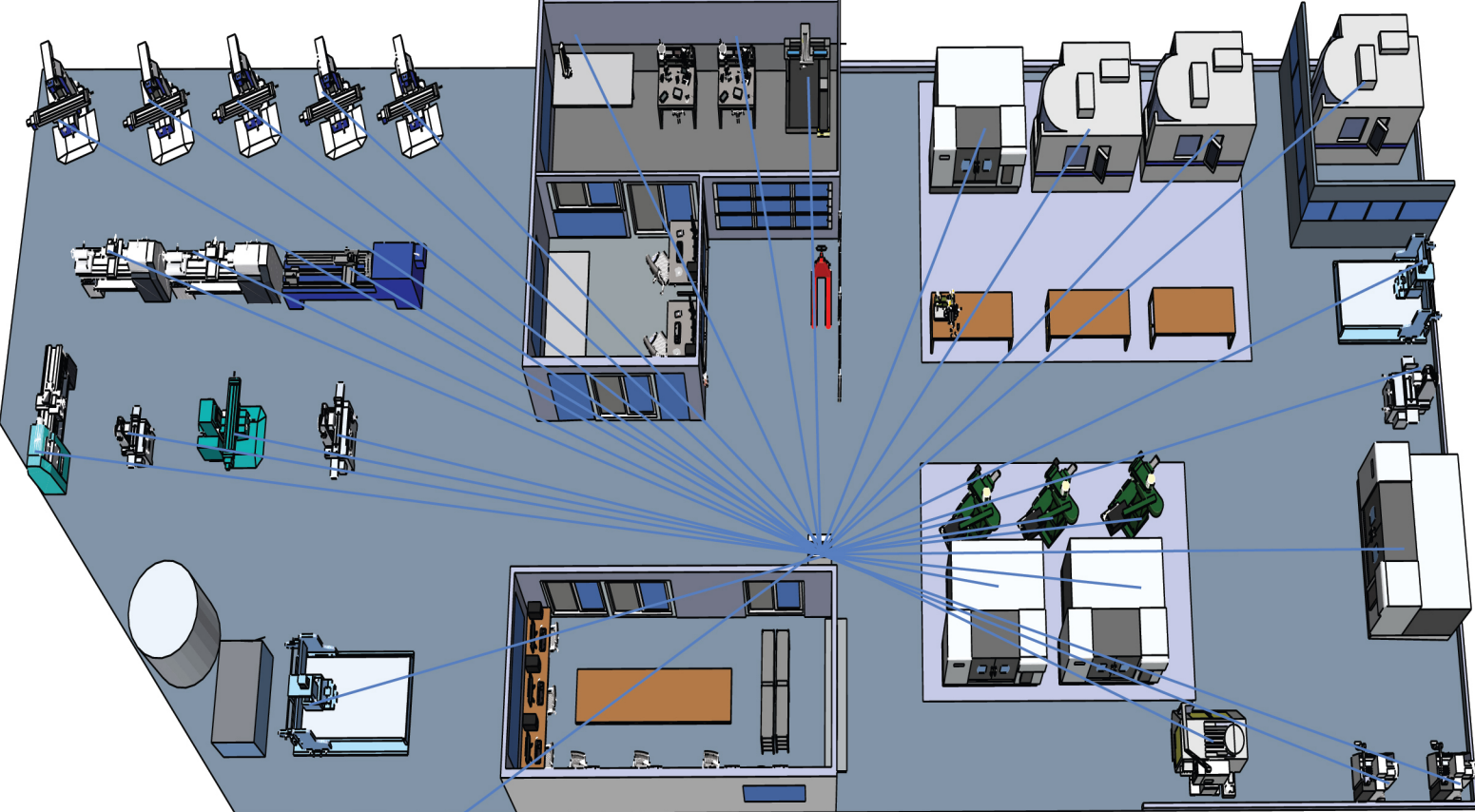
We provide customized business and management consulting services and integrated business solutions in the fields of manufactory machine tool strategic planning, marketing. Our firm helps start-up companies and small organizations to integrate strategy with business value to optimally align their businesses with market opportunities and to build and enhance their success in the marketplace. The unique combination of Skywave Solutions' business and management consulting services with integrated business solutions offers our clients a variety of distinct consulting services as well as comprehensive service packages customized to their individual needs and budgets.



**Address : 95/4 Moo 10, T. Ban-Klang , A. Muang Lamphun 51000 ( Thailand )**

Tel. (66)53 525 091 - 4 ,Fax. (66) 53 525 095 ,E-mail : Training@siamtool.co.th, website : www.siamtool.co.th

**Siam Tool uses Tracking Systems** All about tracking, whether finished products, work-in-process, tools, documents, assets, inventory, or people - it's a science all to itself.



WORK IN PROCESS 29-11-2017

วันที่	เวลา	สถานะ	ชื่อเครื่องจักร	ชื่อพนักงาน	ชื่อชิ้นงาน	จำนวน	เวลาที่ผลิต	เวลาที่รอ	เวลาที่รวม
29-11-2017	08:00:00	ผลิต	เครื่องจักร A	นายสมชาย	ชิ้นงาน A	100	00:05:00	00:00:00	00:05:00
29-11-2017	08:05:00	ผลิต	เครื่องจักร B	นายสมชาย	ชิ้นงาน B	100	00:05:00	00:00:00	00:05:00
29-11-2017	08:10:00	ผลิต	เครื่องจักร C	นายสมชาย	ชิ้นงาน C	100	00:05:00	00:00:00	00:05:00
29-11-2017	08:15:00	ผลิต	เครื่องจักร D	นายสมชาย	ชิ้นงาน D	100	00:05:00	00:00:00	00:05:00
29-11-2017	08:20:00	ผลิต	เครื่องจักร E	นายสมชาย	ชิ้นงาน E	100	00:05:00	00:00:00	00:05:00

WORK IN PROCESS 29-11-2017

วันที่	เวลา	สถานะ	ชื่อเครื่องจักร	ชื่อพนักงาน	ชื่อชิ้นงาน	จำนวน	เวลาที่ผลิต	เวลาที่รอ	เวลาที่รวม
29-11-2017	08:25:00	ผลิต	เครื่องจักร F	นายสมชาย	ชิ้นงาน F	100	00:05:00	00:00:00	00:05:00
29-11-2017	08:30:00	ผลิต	เครื่องจักร G	นายสมชาย	ชิ้นงาน G	100	00:05:00	00:00:00	00:05:00
29-11-2017	08:35:00	ผลิต	เครื่องจักร H	นายสมชาย	ชิ้นงาน H	100	00:05:00	00:00:00	00:05:00
29-11-2017	08:40:00	ผลิต	เครื่องจักร I	นายสมชาย	ชิ้นงาน I	100	00:05:00	00:00:00	00:05:00
29-11-2017	08:45:00	ผลิต	เครื่องจักร J	นายสมชาย	ชิ้นงาน J	100	00:05:00	00:00:00	00:05:00

Tracking systems for Siam Tool added confidence when you order with us, you are able to know your goods are in the production process which is to evaluate how your products will be completed in the allotted time (tracking system can be done via internet).

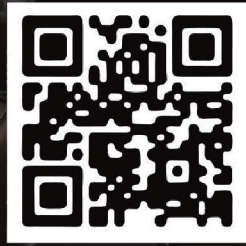
## MACHINE & EQUIPEMENT

No.	Machine Name	Brand	Model	Unit	Accuracy	Working Area
1	WEDM WIRE CUT MACHINE	MITSUBISHI	DWC110SA	1	0.005	280 X 380 X 280
2	SUPER DRILL MACHINE	SHIANG YANG	ZD703G	1	0.0020	270 X 370 X 400
3	CNC MACHINING CENTER	YCM	XV1020A	1	0.003-0.010	1010 X 520 X 550
4	CNC MACHINING CENTER	YCM	XV-560A	1	0.003-0.010	610 X 410 X 450
5	CNC MACHINING CENTER	CM	MV-66A	1	0.003-0.010	660 X 508 X 500
6	CNC TAPING CENTER	BROTHER	TC-S2C	1	0.005/300L	500 X 400 X 300
7	CNC LATHE MACHINE 6 AXIS	HARDING	TALENT51	1	0.001	X=150, Z=500
8	CNC LATHE MACHINE	GE-FONG	G-32HA	1	0.02	X=75, Z=250
9	CNC LATHE MACHINE	PAO-YANG	PY-32	1	0.02	X=75, Z=250
10	CNC LATHE MACHINE	PAO-YANG	PY-32	1	0.02	X=75, Z=250
11	CNC LATHE MACHINE 4 AXIS	YANO	SMV-600	1	0.01	X400 Y800 Z400 A360
12	CNC ROUTER MACHINE	STYLE CNC	SPG1224	1	0.05	X1200 Y2400 Z100
13	CNC WATER JET MACHINE			1	0.02	X1200 Y1800 Z150
14	MILLING MACHINE	PHOEBOS	PBM-25	1	0.020	510 X 260 X 350
15	MILLING MACHINE	PHOEBOS	PBM-45	1	0.020	690 X 300 X 400
16	MILLING MACHINE	TOPWELL	4K	1	0.020	690 X 300 X 350
17	MILLING MACHINE	MICROCUT	M-900A	1	0.020	900 X 300 X 300
18	MILLING MACHINE	JONNY	JD-650A	1	0.020	650 X 300 X 300
19	MILLING MACHINE	KAOFONG	KM-600	1	0.020	600 X 300 X 300
20	MILLING MACHINE	SHIZUOKA	VHR-SD	1	0.01	X800 Y200 Z350
21	NC MILLING	SEIKI	PMC-MF	1	0.010	700 X 300 X 500
22	NC MILLING MACHINE	SHIZUOKA	VHR-AF	1	0.01	X1000 Y250 Z400
23	NC MILLING MACHINE	SHIZUOKA	VHR-AP	1	0.01	X1000 Y250 Z400
24	LATHE MACHINE	WILLIS	MICROCUT 1440	1	0.010	DAI=300, L=600
25	LATHE MACHINE	MORTON	TMC-16X40	1	0.010	DAI=300, L=1000
26	LATHE MACHINE	DENVER LG-560	X2000	1	0.01	X250 Z2000
27	LATHE MACHINE	MORISEIKI	NR-1500G	1	0.01	X400 Z1500
28	LATHE MACHINE	400X750		1	0.01	X200 Z1000
29	BEN LATHE	SUNDAYSD-15		1	0.010	DIA 25, L=300
30	GRINDING MACHINE	MITSUMI MFG	250H1 O/H	1	0.020	400 X 210 X 200
31	GRINDING MACHINE	PERFECT	PFG-CL3060	1	0.020	600 X 360 X 350
32	GRINDING MACHINE	OKAMOTO	350 DX	1	0.002	350 X 150 X 200
33	GRINDING MACHINE	EQUIPTOP	ESG-1A618	1	0.020	430 X 150 X 200
34	GRINDING MACHINE	OKAMOTO	450-DX	1	0.002	400 X 150 X 240
35	PRESS MACHINE	KM-PRESS	KM-45	1	0.050	510 X 810 X 350
36	PRESS MACHINE	YEOO-TSUEN	YT-60	1	0.050	460 X 900 X 350
37	HI SPEED PRESS MACHINE	SHING TAI	ST-25	1	0.020	255 X 560 X 180
38	CUTTING MACHINE	J.THAVORN	JT-50C	1	0.200	MAX. 3MM. 4'X8'
39	BOLDING MACHINE	J.THAVORN	JT-50F	1	0.200	MAX. 3MM. 4'X8'
40	SANDER MACHINE	AMADA	DB-610	1	N/A	X500 L1000
41	PRESS BENDING MACHINE	AMADA	RC-50	1	0.05	L1400

## MEasuring LIST

No.	Machine Type	Brand	Model	Accuracy	Made In	Unit
1	LENGTH GAUGE	HEIDENHAIN	MT-250	0.0005	GERMANY	1
2	DIGIMATIC DIAL	GAUGE MITUYOYO	ID-C1508	0.001	JAPAN	1
3	DIGIMATIC	MICROMETER	MITOYOYO	0.001	JAPAN	3
4	DIAL GAUGE	MITOYOYO	EUP857	0.001	JAPAN	3
5	HIEGHT MASTER	ELETRONICA	OPTIMA PLUS	0.005	INDIA	1
6	VIDEO MEASURING NON-CONTACT	RCSKIM	1510E	± (3+I/75)µm	TAIAN	1
7	BLACK GRANITE SURGACE OEAST	STAR	VSG-09	0.01	TAIAN	1
8	DIGIMATIC CALIPER	MITOYOYO	DC-8" CSX	0.02	JAPAN	10
9	DIGIMATIC CALIPER	MOOR&WRIGHT	MW-080	0.02	ENGLAND	22
10	LENGTH GAUGE	HEIDENHAIN	MT-250	0.5 µm	GERMANY	1

No.	MACHINE TYPE	SOFTWARE	LINEAR ERROR	PROBING ERROR	UNIT
1	CMM:COORDINATE MEASURING MACHINE CONTURA G2 776 RDS	CALYPSO VERSION 5.5	1.8+L/300 µm	1.8 µm	1
2	NON-CONTACT MEASURING	KIM-1510E	+/- (3+(L/200) µm	0.002 mm	1
3	HEIGHT MASTER MEASURING	EX/OPTIMA PLUS 6019	4 µm/600 Inch	3 µm	1
4	VENIER CALIPER	CD-8" CSX	+/- 0.001 Inch	0.00050 Inch, 0.010 mm	1
5	MICRO METER	293-231 (MITOYOYO)	-	+/- 0.001 mm	1
6	DIAL TEST INDICATOR	513-405E (MITOYOYO)	-	3 µm	1



## ABOUT US

Company : SIAM TOOL ENGINEERING CO., LTD.

Scope : Machine Design , Manufacturing of Machine Parts  
Equipment , Tooling , Jigs & Fixtures  
Molds & Die Stamping

Office / Factory : 95/1 Moo 10, T.Ban-Klang, A.Muang  
Lamphun 51000 (Thailand)

Tel : (66)53 525 021 – 4, Fax : (66)53 525 020

Email : [Sales@siamtool.co.th](mailto:Sales@siamtool.co.th), [jirapath@siamtool.co.th](mailto:jirapath@siamtool.co.th)

website : [www.siamtool.co.th](http://www.siamtool.co.th)

BOI Promoted

